

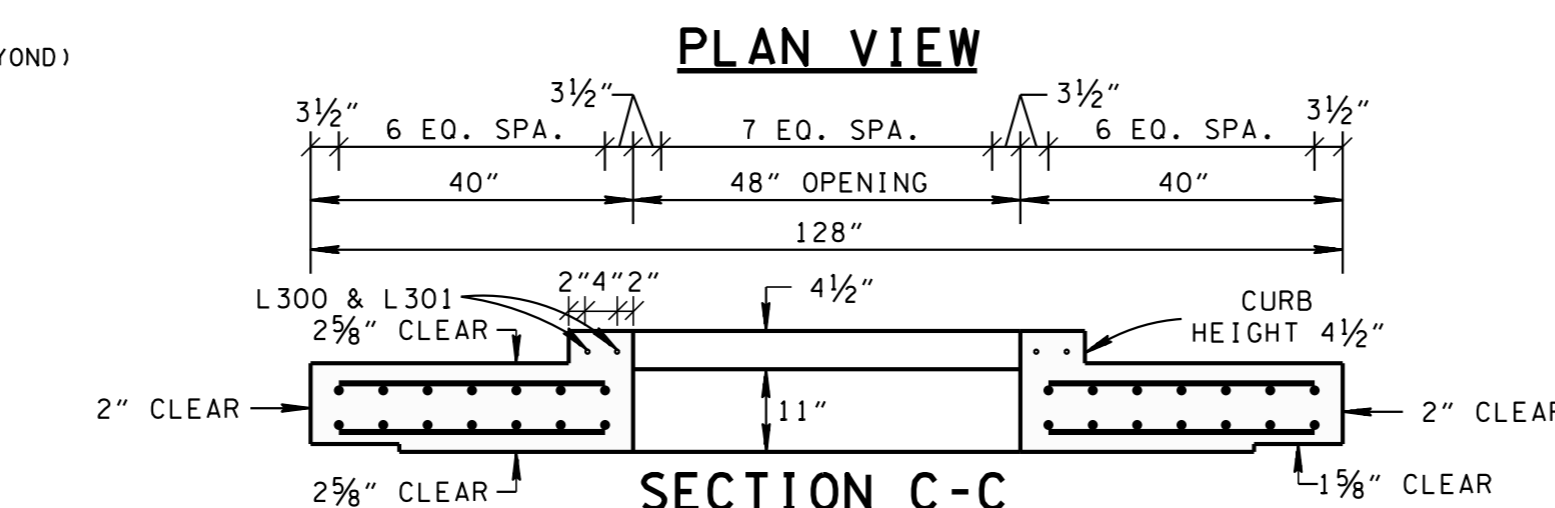
CATCH BASIN DIMENSIONS				FOR DESIGN USE ONLY CATCH BASIN MINIMUM DESIGN DEPTH (FEET)
INSIDE DIAMETER (D) OF PIPE (INCHES)	PIPE WALL THICKNESS (INCHES)	DIAMETER OF CUT-OUT HOLES (INCHES)	BOX SECTION MINIMUM HEIGHTS (INCHES)	
18	2½	25	64	4.21
24	3	32	71	4.75
30	3½	39	78	5.29
36	4	46	85	5.83
42	4½	53	92	6.38
48	5	60	99	6.92
54	5½	67	106	7.46
60	6	74	113	8.00
66	6½	81	120	8.54
72	7	88	127	9.08
78	7½	95	134	9.63

- ☐ REV. 7-29-02: CHANGED ASTM SPECIFICATION IN GENERAL NOTE (C)
- ☐ REV. 9-11-02: CHANGED REINFORCING STEEL IN BASE SECTION.
- ☐ REV. 2-13-04: CHANGED REINFORCING STEEL IN BASE SECTION.

REV. 8-01-12: REVISED CATCH BASIN FOR COMPLIANCE WITH AASHTO LRFD BRIDGE DESIGN SPECIFICATIONS, 4TH EDITION WITH INTERIMS. REVISED REINFORCING, GENERAL NOTES, LEGEND AND ADDITIONAL MISC. DRAFTING EDITS.

- ☐ REV. 3-11-14: ELIMINATED STIRRUPS.

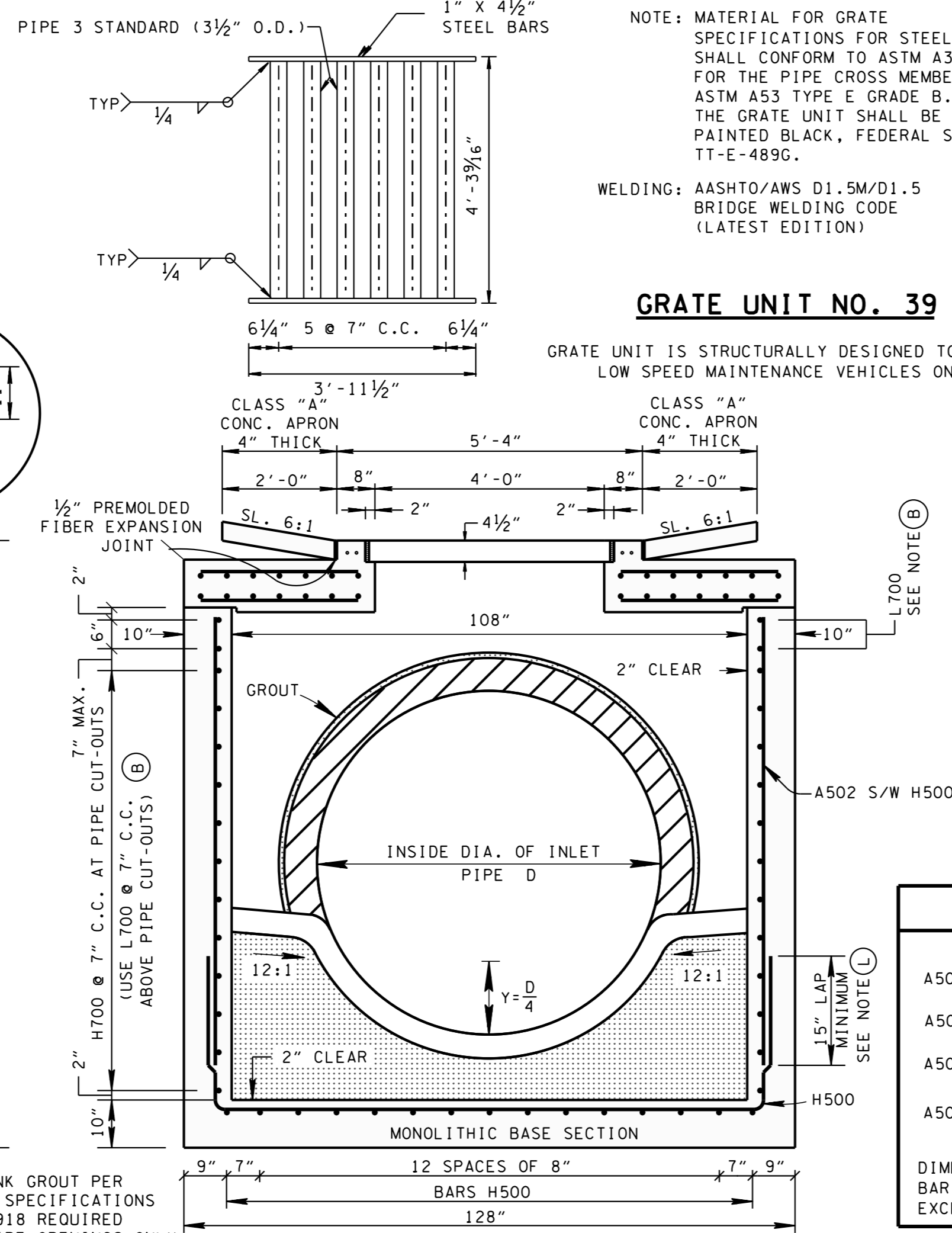
- ① CUT-OUT HOLES BASED ON REINFORCED CONCRETE PIPE WITH WALL TYPE "B".
- ② ALL FLEXIBLE PIPE MATERIALS REQUIRE GASKET. SEE STANDARD DRAWING D-PB-2.
- ③ CUT-OUT HOLES FOR PRECAST STRUCTURES TO BE FORMED IN ORDER TO OBTAIN A SMOOTH EDGED HOLE. SCORED OR ETCHED HOLES WITH REINFORCING STEEL LEFT UNCUT WILL NOT BE PERMITTED.



NOTE: MATERIAL FOR GRATE
SPECIFICATIONS FOR STEEL BARS
SHALL CONFORM TO ASTM A36.
FOR THE PIPE CROSS MEMBERS,
ASTM A53 TYPE E GRADE B.
THE GRATE UNIT SHALL BE
PAINTED BLACK, FEDERAL SPEC.
TT-E-489G.

WELDING: AASHTO/AWS D1.5M/D1.5
BRIDGE WELDING CODE
(LATEST EDITION)

GRATE UNIT IS STRUCTURALLY DESIGNED TO CARRY
LOW SPEED MAINTENANCE VEHICLES ONLY.



--	--

Figure 1 illustrates the dimensions of standard reinforcing bars. The top section shows the cross-sections of bars A500, A501, A502, and A503. A500 has a diameter of 12 inches. A501 has a diameter of 60 inches. A502 has a variable diameter. A503 has a diameter of 36 inches. The bottom section shows the end views of L-shaped bars L300, L301, and L700. L300 has legs of 12 inches and 60 3/8 inches. L301 has legs of 12 inches and 52 3/8 inches. L700 has legs of 12 inches and 113 3/4 inches. All dimensions are given in inches.

DIMENSIONS SHOWN IN THIS LEGEND ARE OUTSIDE TO OUTSIDE OF BAR. STANDARD C.R.S.I. HOOK AND TIE DETAILS SHALL APPLY, EXCEPT AS NOTED.

☒ MINOR REVISION -- FHWA
APPROVAL NOT REQUIRED.

STATE OF TENNESSEE
DEPARTMENT OF TRANSPORTATION

STANDARD
9' X 9' SQUARE
CONCRETE NO. 39
CATCH BASIN

NOT TO SCALE

12-18-98

D-CB-39SE